

The State Fossil

In 2005 Oregon adopted a state fossil. This is a symbol for the State just like the beaver or Douglas Fir. So what is the state fossil? Draw a picture of it below and write its name.

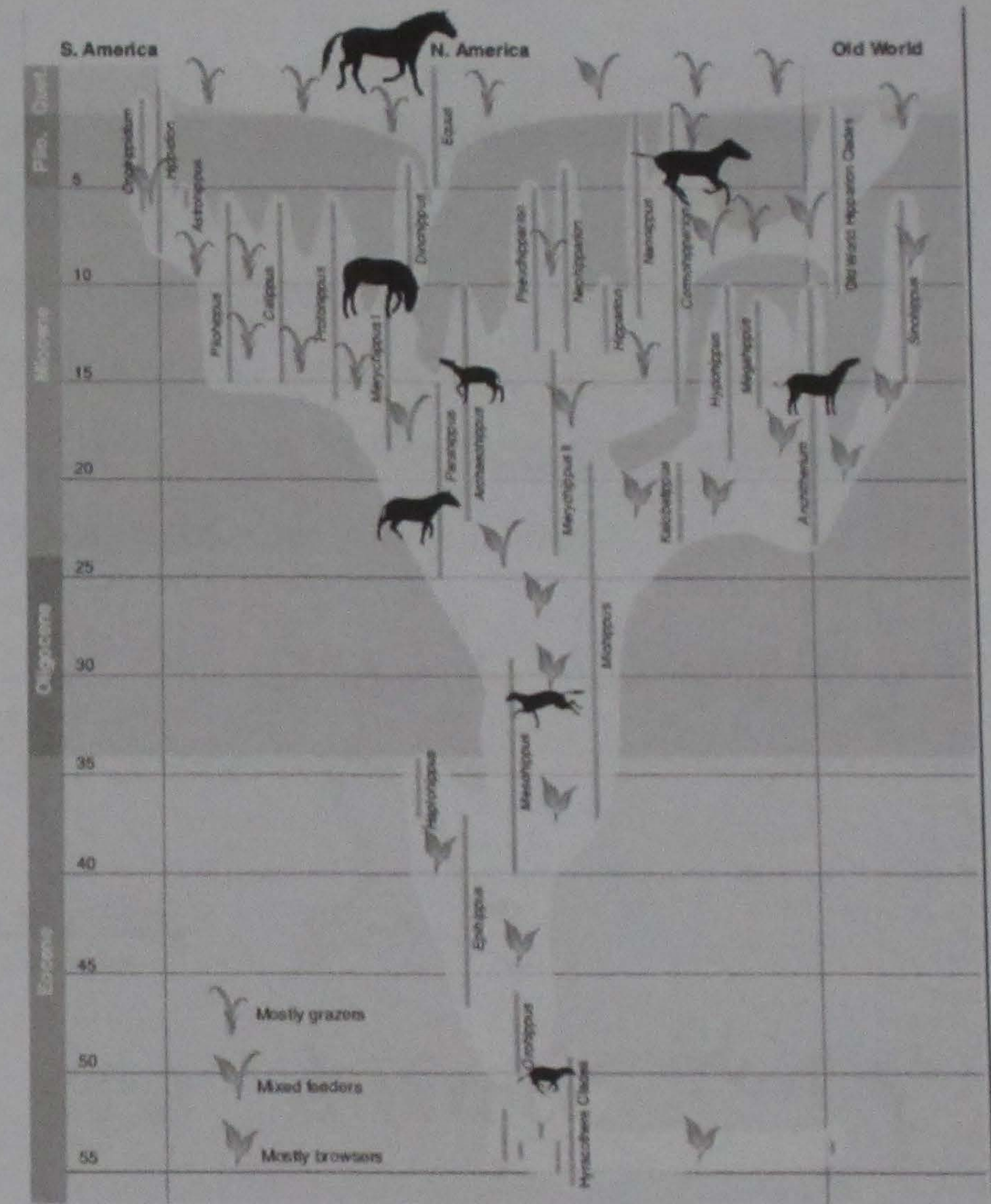


Metascyris

Hint: Go to the table handing out seeds.

Horse Evolution

Millions of years ago



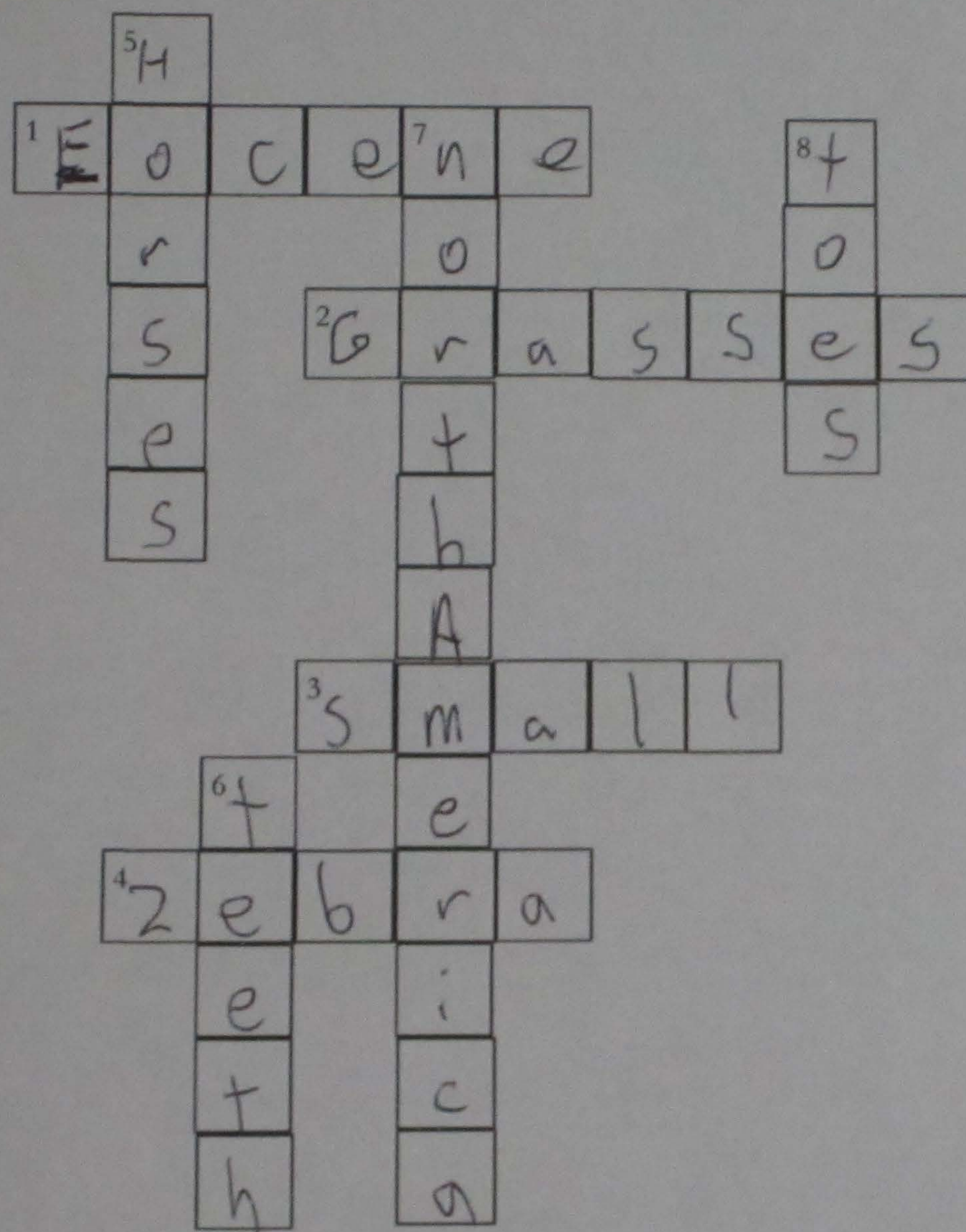
From MacFadden 2005

Based on this tree do you see one group of horses or many?

Many

Why don't all of the blue lines go to the top? They went extinct

Crossword



Hint: The back of the book contains most of the words.

Clues

Across

1. The epoch that the first horses in (55-33 million years ago)
2. What modern horses primarily eat
3. Early horses weren't large but rather _____.
4. Modern horses includes these striped animals from Africa

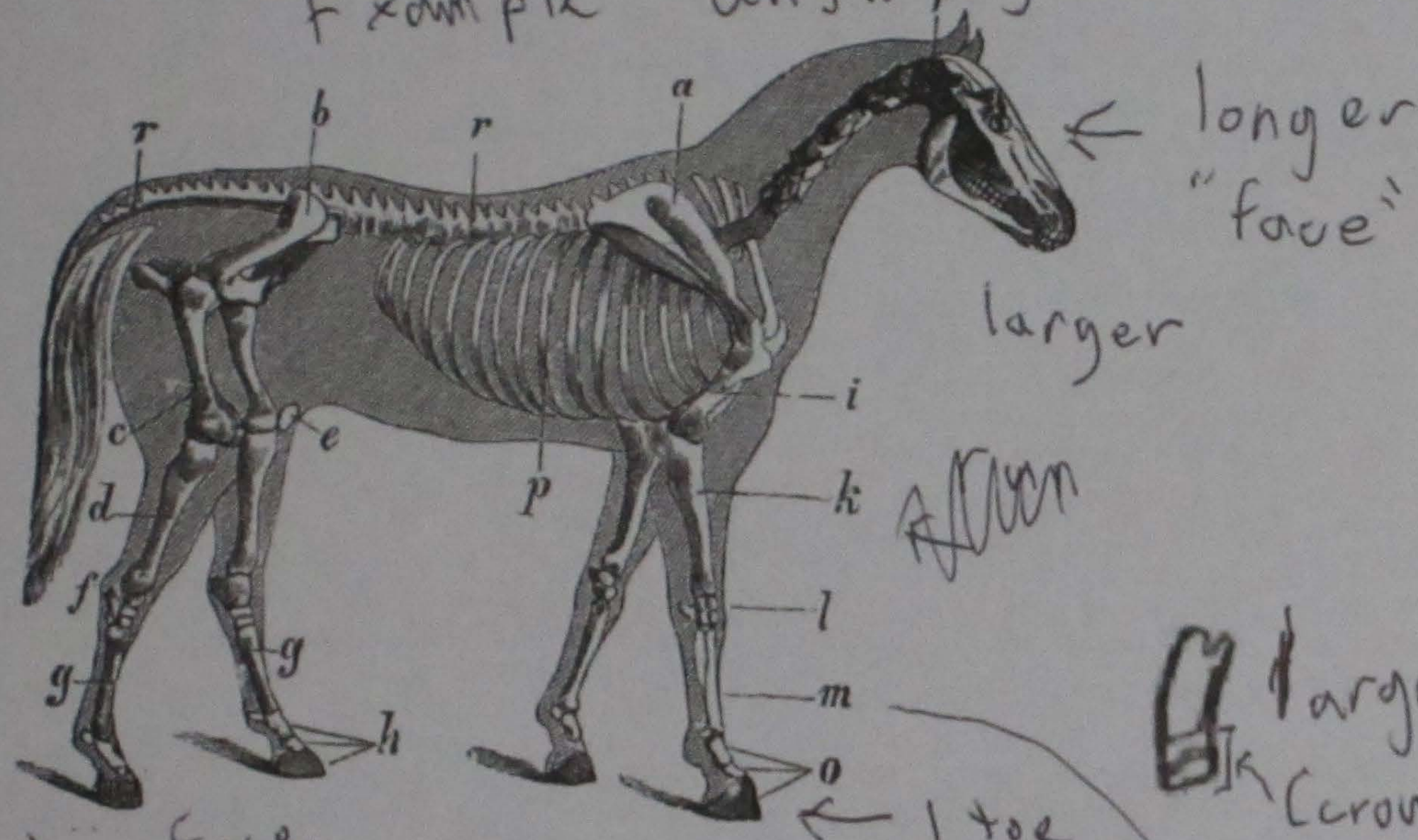
Down

5. The theme of this FossilFest
6. Parts used to bite and chew and can be useful for identification and inferring diet
7. The continent that horses evolved on
8. There was a reduction of this horse foot part through time which helped them run faster

Horses then and now

Name three differences between the modern horse (top) and ancient horse (*Orohippus sp.*) (bottom). What might these differences say about how they lived? (Horses approximate scale to each other. Teeth next to horses.)

Example answers



shorter face



smaller

many toes

small teeth (crown)

large teeth (crown)

Lifestyle runs fast

Lifestyle doesn't run fast

Eat different things

Shark and Ray Teeth

Sharks and rays are related and both have teeth. Go to the shark tooth screening table and find a shark's tooth and a ray tooth. Draw both of them. Why are they different shapes?

ray shark (sample)

Eat different things

